



**LISTA DE PRECIOS 2007**  
**PRICE LIST 2007**

*Resortes  
Neumáticos*

*Gas Springs*

*Ressorts à Gaz*

*Molle a Gas*

*Gasfeder*

*Gasveren*

## RESORTES / GAS SPRINGS

—○	APLICACION	€ PVP	—○	APLICACION	€ PVP
GH0403381	Murphy bed/Canapé	35,00	GS00348	SEVERAL APLICACIONES	37,77
GH0503381	Murphy bed/Canapé	35,00	GS00349	SEVERAL APLICACIONES	37,77
GH0603381	Murphy bed/Canapé	35,00	GS00350	SEVERAL APLICACIONES	42,05
GH0703381	Murphy bed/Canapé	35,00	GS00352	SEVERAL APLICACIONES	32,88
GH0803381	Murphy bed/Canapé	35,00	GS00353	SEVERAL APLICACIONES	33,42
GH0903381	Murphy bed/Canapé	35,00	GS00354	SEVERAL APLICACIONES	31,48
GJ1003381	Murphy bed/Canapé	40,00	GS00356	YUGO	37,77
GJ1153381	Murphy bed/Canapé	40,00	GS00358	SEVERAL APLICACIONES	37,77
GJ1253381	Murphy bed/Canapé	40,00	GS00359	SEVERAL APLICACIONES	37,77
GJ1403381	Murphy bed/Canapé	40,00	GS00360	SEVERAL APLICACIONES	37,77
GJ1503381	Murphy bed/Canapé	40,00	GS00364	SEVERAL APLICACIONES	33,42
GJ1603381	Murphy bed/Canapé	40,00	GS00365	SEVERAL APLICACIONES	33,42
GN11101	RIO	37,77	GS00366	SEVERAL APLICACIONES	33,42
GN11102	SPORTAGE	37,77	GS00367	127	35,06
GN12103	LADA 111	37,77	GS00369	SEVERAL APLICACIONES	37,77
GN12104	LADA 112	37,77	GS00371	SEAT 127 11.81	39,54
GN12301	DISCOVERY (D)	37,77	GS00372	128	39,54
GN12302	FRELANDER	37,77	GS00373	127 L SPORT	39,54
GN12306	SANTANA	37,77	GS00374	SIMCA	39,54
GN13302	MONTERO SPORT	37,77	GS00376	SEAT 127 TRUNK / MALETERO	39,54
GN13303	L200 (T)	37,77	GS00377	GSA BREAK	39,54
GS00321	SEVERAL APLICACIONES	42,05	GS00379	GS BERLINA	37,77
GS00327	SEVERAL APLICACIONES	37,77	GS00380	GS BREAK	39,54
GS00328	132 TRUNK / MALETERO	35,06	GS00381	CX I BERLINA / XM BREACK	39,54
GS00330	SEVERAL APLICACIONES	33,42	GS00383	SEVERAL APLICACIONES	37,77
GS00331	SEVERAL APLICACIONES	37,77	GS00389	SEVERAL APLICACIONES	33,42
GS00332	SEVERAL APLICACIONES	37,77	GS00393	CX VISA/VISA 2	39,54
GS00334	SEVERAL APLICACIONES	27,84	GS00394	SEVERAL APLICACIONES	31,48
GS00335	SEVERAL APLICACIONES	31,48	GS00395	SEAT PANDA MALETERO	44,04
GS00336	SEVERAL APLICACIONES	37,77	GS00396	SEVERAL APLICACIONES	37,77
GS00337	SEVERAL APLICACIONES	31,48	GS00399	SEVERAL APLICACIONES	32,88
GS00338	SEVERAL APLICACIONES	27,84	GS01011	ALFA COUPE GTV	35,99
GS00339	SEVERAL APLICACIONES	33,42	GS01015	ALFETTA GT/GTV	75,34
GS00340	R18 FAMILIAR	39,54	GS02005	AUDI 100 AVANT/200 TAPA MOTOR	70,78
GS00341	SEVERAL APLICACIONES	33,42	GS02007	AUDI 100 AVANT/ QUATRO 4A	40,53
GS00342	SEVERAL APLICACIONES	37,77	GS02008	80 III	45,34
GS00343	SEVERAL APLICACIONES	33,42	GS02010	AUDI 80	59,36
GS00344	SEVERAL APLICACIONES	37,77	GS02011	AUDI 80/90	59,66
GS00345	SEVERAL APLICACIONES	33,42	GS02012	AUDI 80/90/SPOILER	54,79
GS00346	SEVERAL APLICACIONES	37,77	GS02015	AUDI A3/A4 AVANT	44,34
GS00347	SEVERAL APLICACIONES	31,6	GS02016	AUDI A4/A4 AVANT TAPA MOTOR	51,58

## RESORTES / GAS SPRINGS

	APLICACION	€ PVP		APLICACION	€ PVP
GS02020	AUDI A6/A6 QUATTRO TAPA MOTOR	75,34	GS07038	KA	44,34
GS02021	COUPE / QUATTRO SPORTS	52,51	GS07039	GALAXY	68,49
GS03002	A 112 TAPA MOTOR	33,47	GS08001	ELBA	57,08
GS03003	Y 10	57,08	GS08003	MINI 90 / 120 - MINI 3 SERIE I	57,08
GS03004	Y 10	61,63	GS08004	MINI 90 / 120 - MINI 3 SERIE II	61,64
GS04001	BMW 3 SERIES SEDAN, CABRIO, E30, TAPA MOTOR	43,34	GS09001	NIVA I	66,21
GS04003	3 SERIES SEDAN, CABRIO E36	52,51	GS10003	DEDRA S.W.	57,08
GS04004	BMW 3 SERIES SEDAN E 36	40,29	GS10006	KAPPA MOTORE	61,64
GS04005	3 SERIES COUPE E36	52,51	GS10007	KAPPA S.W.	57,08
GS04008	BMW 5 SERIES SEDAN E28, TAPA MOTOR	52,51	GS10014	Y 11	48,1
GS04009	5 SERIES TOURING E34	48,6	GS10016	ZETA	44,34
GS04010	5 SERIES E 34/SPOILER	52,76	GS11001	XJS FRONT BONNET	59,36
GS04011	BMW 5 SERIES E 34	40,33	GS11002	XJ6/12 FRONT BONNET	59,36
GS04016	7 SERIES SEDAN E32	49,98	GS12001	200-320 TE 124 KOMBI	84,59
GS05009	CX BREAK	70,78	GS12002	200-300 TD 123 KOMBI	92,46
GS05014	GSA	35,64	GS12003	190/190E 201 TAPA MOTOR	63,5
GS05016	GSA BERLINA	61,64	GS13002	ASCONA C SPOILER	45,25
GS05018	SAXO	39,83	GS13011	CALIBRA A	57,08
GS05022	XANTIA BERLINA	34,05	GS13015	CORSA A	54,78
GS05030	XSARA BREAK TAPA MOTOR	50,59	GS13017	CORSA B 3D SPOILER	43,44
GS05031	XANTIA	44,74	GS13019	KADETT D CARAVAN	68,49
GS06001	132	54,79	GS13020	KADETT D CARAVAN	68,49
GS06002	BARCETA	59,36	GS13022	KADETT D	35,45
GS06006	FIAT 131 PANORAMA	40,25	GS13026	KADETT CITY	61,64
GS06007	FIAT 132 BETA BN	54,79	GS13027	KADETT E CARAVAN	47,03
GS06008	FIAT DUCATO	75,34	GS13040	MANTA C	80,63
GS06009	FIAT DUNA WEEKEND	61,64	GS13041	REKORD E CARAVAN	61,64
GS06014	FIAT TIPO I	61,64	GS13042	TIGRA	39,4
GS06027	FIAT ARGENTA	50,34	GS13044	VECTRA A COUPE	33,47
GS06028	BRAVA	40,75	GS13044	VECTRA A COUPE	33,47
GS06029	FIAT BRAVO	36,74	GS13046	VECTRA B 5D	35,99
GS06031	FIAT CROMA	44,34	GS14004	306 BERLINE (7B)	45,18
GS07007	ESCORT XR3	59,36	GS14004	306 BERLINE (7B)	45,18
GS07011	ESCORT TURNIER MK V/VI/VII	35,4	GS14012	406 BERLINA	39,68
GS07015	ESCORT MK III/IV SIN LIMPIAPARABRISAS	34,3	GS14015	106 II / HATCH	36,28
GS07016	ESCORT	34,13	GS14016	106 I 1A,1C	36,34
GS07017	ESCORT MKVI/VII	41,23	GS14020	305 BREAK/FAMILIAR	61,64
GS07018	ESCORT MKVI/VII CON SPOILER	46,61	GS14027	604	57,08
GS07020	ESCORT KOMBI	61,64	GS15001	924/944 TAPA MOTOR	49,5
GS07029	FIESTA IV	41,63	GS15002	924/944	57,08
GS07037	GRANADA TURNIER	61,64	GS15005	911/912/914/ TAPA MOTOR	26

## RESORTES / GAS SPRINGS

—○—	APLICACION	€ PVP	—○—	APLICACION	€ PVP
GS15006	911/912/914 TAPA MOTOR	57,08	GS22038	PASSAT VARIANT WAGON	48,4
GS16001	400 TOURNER	57,08	GS23001	440	61,64
GS16002	CLIO I BACCARA B57/C57	35,31	GS23002	145 KOMBI	57,08
GS16009	LAGUNA I B56 HATCH	36,27	GS23005	440	61,64
GS16013	MEGANE COUPE DA	45,34	GS23007	480 ES COUPE	59,36
GS16021	TWINGO I,II	35,31	GS23008	740,760 SEDAN	52,51
GS16023	R25 B29 REAR WIPER	48,29	GS23012	850 BERLINA	52,51
GS16029	R11	57,08	GS23013	850 KOMBI	68,49
GS16043	R21 NEVADA K48	41,97	GS23017	S90/940/960	66,21
GS17003	MAESTRO	61,64	GS24001	GRAND CHEROKEE	36,57
GS17007	MONTEGA ESTATE	59,36	GS28001	GS BERLINA	30,77
GS18002	9000 CD/CS	59,36	GS28001	GS BERLINA	30,77
GS18003	9000 CD/CS TAPA MOTOR	48,29	GS28002	GS BREAK/FAMILIAR	34,52
GS18004	9000 (H1007932/H8000100)	35,68	GS28003	CX BERLINA	34,77
GS18006	9000 (H1007931/H8000099)	61,64	GS28003	CX BERLINA	34,77
GS18007	9000 (H1007931/H8000099)	61,64	GS28006	SEVERAL APLICACIONES	36,21
GS18009	99,900 KOMBI/COUPE	57,08	GS28007	127, FURA	36,21
GS19008	CORDOBA VARIO	48,36	GS28007	127	36,21
GS19011	IBIZA II	39,83	GS28008	SEVERAL APLICACIONES	34,39
GS19016	RITMO WITH. SPOILER	41,19	GS28009	FIESTA I	36,29
GS20002	FELICIA I / II	66,21	GS28009	FIESTA I	36,29
GS20003	OCTAVIA KOMBI / SEDAN	40,64	GS28010	SEVERAL APLICACIONES	43,44
GS20003	OCTAVIA	40,64	GS28011	SEVERAL APLICACIONES	48,86
GS21002	ASTRA D HATCHBACK	66,21	GS28012	SEVERAL APLICACIONES	48,86
GS21004	ASTRA D ESTATE	68,49	GS28013	SEVERAL APLICACIONES	48,86
GS21012	CAVALIER II/SPOILER	45,25	GS28014	SEVERAL APLICACIONES	33,2
GS21017	CALIBRA	57,08	GS28018	SEVERAL APLICACIONES	44,34
GS21018	CARLTON I ESTATE	61,64	GS28019	SEVERAL APLICACIONES	34,39
GS21019	CARLTON II ESTATE	59,36	GS28020	R14 121	35,4
GS21020	CARLTON II ESTATE/SPOILER	57,08	GS28021	R14 121 CONT.ELECT.	42,19
GS21023	CHEVETTE	61,64	GS28022	VISA	35,9
GS22008	POLO CLASSIC 6KV2	40,93	GS28024	GSA	35,64
GS22009	POLO 6N1	38,91	GS28026	SEVERAL APLICACIONES	36,24
GS22014	POLO L	59,36	GS28027	SEVERAL APLICACIONES	33,51
GS22018	SCIROCCO 16V/GT/GTX	59,36	GS28028	SEVERAL APLICACIONES	34,39
GS22019	SHARAN 7M	68,49	GS28029	131, 131 FAMILIAR	35,06
GS22020	TRANSPORTER III/V	33,47	GS28031	SEVERAL APLICACIONES	33,47
GS22027	GOLF III / IV CABRIO / VARIANT	44,75	GS28037	R18 BREAK/FAMILIAR	35,4
GS22031	LUPO	44,75	GS28039	SEVERAL APLICACIONES	33,47
GS22034	PASSAT IV 3B2	54,39	GS28040	SEVERAL APLICACIONES	33,47
GS22036	PASSAT VARIANT III	48,4	GS28041	SEVERAL APLICACIONES	33,47



## RESORTES / GAS SPRINGS

	APLICACION	€ PVP		APLICACION	€ PVP
GS28043	SEVERAL APLICACIONES	33,47	GS28098	BX GTI/TURBO/16V	34,76
GS28044	SEVERAL APLICACIONES	32,57	GS28099	BX BERLINA TURBO	34,76
GS28050	SEVERAL APLICACIONES	42,54	GS28101	309 I LH	41,15
GS28052	FIESTA II	40,4	GS28102	309 I RH	41,15
GS28053	FIESTA II wiper	40,4	GS28106	FIESTA III	41,63
GS28054	PATROL RH	56,46	GS28108	AX	34,5
GS28055	PATROL LH	56,46	GS28110	SEVERAL APLICACIONES	33,47
GS28056	BX	34,94	GS28111	SEVERAL APLICACIONES	33,47
GS28058	505 BERLINA	36,34	GS28113	PANDA	38,61
GS28059	SEVERAL APLICACIONES	33,47	GS28114	A 112	33,47
GS28060	PATROL RH STATION WAGON	55,58	GS28118	309 II	39,83
GS28061	ASTRA	34,45	GS28119	R21 B48 HATCH	37,11
GS28062	127	35,63	GS28123	R19 B/C53	33,51
GS28064	R11 B/C37	42,28	GS28131	R19 CHAMADE SPORT	32,57
GS28065	VISA	35,69	GS28132	CLIO I B57/C57	35,31
GS28066	IBIZA I	36,21	GS28133	FIESTA III	44,34
GS28069	RITMO	35,06	GS28134	FIESTA III	44,34
GS28070	R5 II B40/C40/S40	36,24	GS28135	ZX SPOILER	35,99
GS28071	505 BERLINA	36,97	GS28136	SERENA LX LH	69,83
GS28073	ESCORT MK VI, VII	41,23	GS28140	UNO (T)	33,47
GS28074	RITMO SPOILER	43,25	GS28141	TIPO II	36,34
GS28075	POLO HATCH 86C	44,34	GS28142	SEVERAL APLICACIONES	39,83
GS28076	NOVA	53,31	GS28146	ZX	35,94
GS28077	3 SERIES CABRIOLET	32,4	GS28147	R19 I,II SPORT	37,11
GS28078	6 SERIES SEDAN E24	32,35	GS28148	TOLEDO	44,34
GS28079	3 SERIES CABRIOLET	32,4	GS28149	IBIZA II	39,83
GS28080	SAFARI RH	54,04	GS28150	132 TRUNK / MALETERO	35,31
GS28081	SAFARI LH	54,04	GS28152	R19 CHAMADE L53	35,31
GS28083	JIMNY/SAMURAI/SIERRA/SA310/SA413/SJ410/SJ413	35,4	GS28153	TWINGO I,II	35,4
GS28084	R11 B/C37	41,62	GS28155	TRANSPORTER WITH WIPER	33,47
GS28086	BX TURBO	34,94	GS28156	UNO (146A)	36,03
GS28087	ORION	52,82	GS28157	CAVALIER HATCH	33,47
GS28088	MALAGA	33,47	GS28158	ESCORT MK V	34,13
GS28089	ESCORT MK III/IV NO WIPER	34,3	GS28159	ESCORT MK V	34,13
GS28090	ESCORT MK III/IV	34,3	GS28160	ESCORT MK VI / VII	35,4
GS28092	GOLF II	33,82	GS28161	ASTRA III/ASTRA F	34,45
GS28093	SEVERAL APLICACIONES	33,47	GS28162	106 I	36,4
GS28094	SEVERAL APLICACIONES	33,47	GS28163	SEVERAL APLICACIONES	39,83
GS28095	SEVERAL APLICACIONES	33,47	GS28167	SEVERAL APLICACIONES	32,57
GS28096	R21 Kombi (K48_)	41,97	GS28169	SERENA LX RH	69,83
GS28097	R11 B/C37	37,11	GS28173	SERENA L RH	60,42

## RESORTES / GAS SPRINGS

—○	APLICACION	€ PVP	—○	APLICACION	€ PVP
GS28174	SERENA L LH	60,42	GS28215	SEVERAL APLICACIONES	50,68
GS28175	SEVERAL APLICACIONES	38,88	GS28216	SEVERAL APLICACIONES	40,26
GS28176	SEVERAL APLICACIONES	33,47	GS28217	SEVERAL APLICACIONES	40,26
GS28177	THEMA S.W.	45,05	GS28218	SEVERAL APLICACIONES	40,26
GS28178	PUNTO I	35,31	GS28219	SEVERAL APLICACIONES	40,04
GS28179	CROMA	44,34	GS28220	SEVERAL APLICACIONES	40,04
GS28180	TEMPRA STATION WAGON	35,4	GS28221	SEVERAL APLICACIONES	40,04
GS28181	UNO TURBO	34,45	GS28223	205 I,II	35,06
GS28182	REGATA WEEKEND	33,47	GS28224	SEVERAL APLICACIONES	33,47
GS28183	DUNA (146 B)	33,47	GS28225	SEVERAL APLICACIONES	32,57
GS28184	SEVERAL APLICACIONES	36,54	GS28226	SEVERAL APLICACIONES	38,27
GS28185	306 (7A,7C)	44,34	GS28227	SEVERAL APLICACIONES	37,11
GS28186	SEVERAL APLICACIONES	33,47	GS28228	SEVERAL APLICACIONES	37,11
GS28187	SEVERAL APLICACIONES	35,31	GS28229	SEVERAL APLICACIONES	37,11
GS28188	SEVERAL APLICACIONES	35,31	GS28230	SEVERAL APLICACIONES	37,11
GS28189	SEVERAL APLICACIONES	33,47	GS28231	SEVERAL APLICACIONES	33,47
GS28190	A6	54,3	GS28232	SEVERAL APLICACIONES	34,13
GS28191	TT COUPE/ROADSTER	52,93	GS28233	SEVERAL APLICACIONES	33,47
GS28192	SEVERAL APLICACIONES	35,31	GS28234	SEVERAL APLICACIONES	44,34
GS28193	SEVERAL APLICACIONES	35,31	GS28235	SEVERAL APLICACIONES	44,34
GS28194	SEVERAL APLICACIONES	35,31	GS28236	SEVERAL APLICACIONES	39,59
GS28195	SEVERAL APLICACIONES	35,31	GS28237	SEVERAL APLICACIONES	39,59
GS28196	SEVERAL APLICACIONES	35,31	GS28238	SEVERAL APLICACIONES	39,59
GS28197	SEVERAL APLICACIONES	35,31	GS28239	SEVERAL APLICACIONES	35,06
GS28198	SEVERAL APLICACIONES	35,31	GS28240	SEVERAL APLICACIONES	33,47
GS28199	SEVERAL APLICACIONES	35,31	GS28244	505 BREAK	35,8
GS28200	SEVERAL APLICACIONES	35,31	GS28245	405 BREAK/FAMILIAR	44,34
GS28201	SEVERAL APLICACIONES	43,04	GS28249	POLO II 86C	44,34
GS28202	SEVERAL APLICACIONES	47,97	GS28251	240,260 SERIE	36,49
GS28203	SEVERAL APLICACIONES	47,97	GS28252	340,360 HATCH	48,19
GS28204	SEVERAL APLICACIONES	47,97	GS28254	S90/940/960 KOMBI	43,44
GS28205	SEVERAL APLICACIONES	47,97	GS28255	900 (YS3D)	45,4
GS28206	SEVERAL APLICACIONES	47,97	GS28256	900 (YS3D)	45,9
GS28207	SEVERAL APLICACIONES	47,97	GS28257	BX BREAK	36,21
GS28208	SEVERAL APLICACIONES	47,97	GS28259	SEVERAL APLICACIONES	35,31
GS28209	SEVERAL APLICACIONES	43,04	GS28260	SEVERAL APLICACIONES	38,02
GS28210	SEVERAL APLICACIONES	37,11	GS28261	DEDRA	50,28
GS28211	SEVERAL APLICACIONES	37,11	GS28262	DELTA I	52,49
GS28212	SEVERAL APLICACIONES	37,11	GS28263	33	37,62
GS28213	SEVERAL APLICACIONES	48,86	GS28264	PANDA SUPERNOVA	48,86
GS28214	SEVERAL APLICACIONES	48,86	GS28266	SEVERAL APLICACIONES	48,86

## RESORTES / GAS SPRINGS

	APLICACION	€ PVP		APLICACION	€ PVP
GS28267	SEVERAL APLICACIONES	35,31	GS28318	SEVERAL APLICACIONES	35,71
GS28271	SEVERAL APLICACIONES	37,11	GS28321	406 BERLINA	43,6
GS28272	SIERRA L/GL/GHIA	33,47	GS28322	SEVERAL APLICACIONES	43,44
GS28273	SIERRA L/GL/GHIA WIPER	33,47	GS28323	SAXO	40,1
GS28274	SEVERAL APLICACIONES	42,54	GS28324	EVASION	44,34
GS28275	SEVERAL APLICACIONES	42,54	GS28325	EVASION	44,34
GS28276	SEVERAL APLICACIONES	42,54	GS28327	MONDEO HATCH	51,6
GS28280	SEVERAL APLICACIONES	32,57	GS28328	A4 AVANT	51,6
GS28281	SEVERAL APLICACIONES	32,57	GS28329	SEVERAL APLICACIONES	38,02
GS28283	SIERRA Kombi (BNG)	33,47	GS28330	SEVERAL APLICACIONES	56,13
GS28284	SIERRA TURNIER	33,6	GS28331	ASTRA CARAVAN	56,13
GS28285	SEVERAL APLICACIONES	35,94	GS28332	SEVERAL APLICACIONES	47,97
GS28286	SEVERAL APLICACIONES	35,31	GS28333	SEVERAL APLICACIONES	47,97
GS28287	MINI METRO	34,45	GS28335	XANTIA BREAK	37,28
GS28288	100 (XP)	37,63	GS28336	FIESTA MK III	41,63
GS28289	ESCORT TURNIER MKIII/IV	40,75	GS28337	A2	33
GS28290	ESCORT XR3	40,75	GS28338	XANTIA	33,4
GS28291	ESCORT XR3	40,75	GS28339	XANTIA	33,4
GS28292	RANGE ROVER I CHASIS B	44,34	GS28340	BRAVO	36,8
GS28293	RANGE ROVER I CLASIC	44,34	GS28341	BRAVA	40,9
GS28294	KADETT E	34,39	GS28342	LAGUNA I RH B56	36,27
GS28295	ASTRA CARAVAN WIPER	55,18	GS28343	LAGUNA I RH B56 (WITH LAT.PROT.)	36,27
GS28296	ASTRA ESTATE MKII	47,03	GS28344	LAGUNA I (B56_)	36,4
GS28297	ASTRA III/F CARAVAN	45,25	GS28345	LAGUNA I BREAK K56	44,34
GS28298	ASCONA C	45,25	GS28347	A6	49
GS28299	CORSA A TR,SR	54,78	GS28348	PRIMERA HB SR 20 DE	36,17
GS28300	GOLF I	44,34	GS28352	MEGANE I	38,09
GS28301	PASSAT III VARIANT	48,4	GS28353	POLO 6N1	39
GS28302	POLO HATCH 86C	44,34	GS28354	ZX BREAK	51,26
GS28304	ESPACE II J63	39,83	GS28356	GOLF III	44,5
GS28305	ESPACE II J63	33,47	GS28357	KADETT E REAR WIPER	34,39
GS28306	SEVERAL APLICACIONES	35,31	GS28358	KADETT E SPOILER REAR WIPER	34,39
GS28307	SEVERAL APLICACIONES	48,86	GS28359	PASSAT VARIANT I/II 32B	50,63
GS28308	SEVERAL APLICACIONES	48,86	GS28360	POLO II COUPE 86C	50,63
GS28309	SEVERAL APLICACIONES	37,11	GS28361	POLO II COUPE	50,63
GS28312	SEVERAL APLICACIONES	35,4	GS28362	OMEGA A CARAVAN	44,34
GS28313	SEVERAL APLICACIONES	35,4	GS28363	VECTRA A COUPE	33,47
GS28314	SEVERAL APLICACIONES	35,4	GS28364	PASSAT I HATCH / II	37,11
GS28315	SEVERAL APLICACIONES	35,4	GS28365	100	40,53
GS28316	SEVERAL APLICACIONES	35,4	GS28366	100/200 AVANT	41,66
GS28317	SEVERAL APLICACIONES	35,71	GS28367	CORSA B 5D	39,83

## RESORTES / GAS SPRINGS

—○—	APLICACION	€ PVP	—○—	APLICACION	€ PVP
GS28368	CORSA B 3D	43,44	GS28414	146 SPORT/SPIDER	36,43
GS28369	CORSA B	43,6	GS28415	146	42,18
GS28371	EXPRESS / EXPRESS RAPID	48,86	GS28416	155	43,05
GS28372	MONDEO I / II	43,6	GS28418	164	33,21
GS28373	MONDEO I	43,6	GS28419	164	43,82
GS28374	MONDEO HATCH/ SPOILER	51,6	GS28420	25	48,8
GS28375	MONDEO KOMBI	36,51	GS28421	CONCERTO	48,9
GS28376	CINQUECENTO / SEICENTO	44,34	GS28422	CONCERTO	55,89
GS28377	OMEGA B CARAVAN	44,34	GS28423	XSARA	54,47
GS28379	SAFRANE I	49,5	GS28424	XSARA	51,1
GS28380	DELTA II	47,46	GS28425	SEVERAL APLICACIONES	48,9
GS28381	XM BREAK/FAMILIAR	51,8	GS28426	A4	49
GS28382	VENTO 1HX0	48,08	GS28427	SEVERAL APLICACIONES	35,31
GS28383	A3	44,5	GS28428	305 BERLINE	46,03
GS28384	OMEGA B BERLINA/SEDAN	41,88	GS28429	SAMARA	40,75
GS28385	605	48,86	GS28431	SIERRA XR4	63,53
GS28387	MAREA WEEKEND	49,84	GS28432	CIVIC V	48,7
GS28388	KA	44,5	GS28433	ESCORT MK VI / VII	46,8
GS28389	Y 10	57,08	GS28434	ESPACE I (J11)	44,5
GS28391	MEGANE SCENIC JA	38,31	GS28435	80 QUATTRO	59,5
GS28392	VECTRA B	36,1	GS28436	80 QUATTRO	60,2
GS28393	VECTRA B CARAVAN	51,9	GS28437	SEVERAL APLICACIONES	36,03
GS28394	132 TRUNK / MALETERO	45	GS28438	80/90	52,9
GS28395	CORDOBA II	48,36	GS28439	PASSAT IV VARIANT	45
GS28396	S40 / SPOILER	35,31	GS28440	3 SERIES COUPE E36	40,5
GS28397	V40	44,34	GS28441	800 (XS)	47,7
GS28398	PRIMERA	36,9	GS28442	90	60
GS28399	PRIMERA	37,2	GS28444	306 (7B)	50,1
GS28400	SEVERAL APLICACIONES	48,86	GS28445	PASSAT V VARIANT	53,15
GS28401	306 BREAK FAMILIAR	33,41	GS28447	SCORPIO I L/LG/GHIA	53,5
GS28402	406 BREAK/FAMILIAR	32,88	GS28448	SCORPIO I L/LG/GHIA	52,81
GS28404	SEVERAL APLICACIONES	47,91	GS28449	KANGOO	70,34
GS28405	PRIMERA HB GA 16 DS, SR 20 DI	36,17	GS28450	SIERRA SPORT	63,8
GS28406	PRIMERA	45,4	GS28451	VITARA	38,1
GS28407	PRIMERA	48,9	GS28452	SEVERAL APLICACIONES	38,46
GS28408	SEVERAL APLICACIONES	48,86	GS28453	SEVERAL APLICACIONES	49,69
GS28409	33 1.7 L	41,3	GS28454	SEVERAL APLICACIONES	34,44
GS28410	33 REST.	38,96	GS28457	TRANSPORTER IV	48,95
GS28411	SEVERAL APLICACIONES	35,31	GS28460	SEVERAL APLICACIONES	48,95
GS28412	DELTA II SPORT	47,42	GS28466	SEVERAL APLICACIONES	52,99
GS28413	145	47,56	GS28468	SEVERAL APLICACIONES	35,75



## RESORTES / GAS SPRINGS

—○	APLICACION	€ PVP	—○	APLICACION	€ PVP
GS28483	SEVERAL APLICACIONES	41,03	GS28528	A4	35,4
GS28484	SEVERAL APLICACIONES	34,15	GS28530	CLIO (B/C57)	35,4
GS28485	SEVERAL APLICACIONES	48,86	GS28531	LEON	44,34
GS28486	SEVERAL APLICACIONES	34,83	GS28532	SCORPIO I /II	40,1
GS28487	SEVERAL APLICACIONES	36,01	GS28533	CADDY(D)PLATFORM	34,6
GS28488	SEVERAL APLICACIONES	44,34	GS28534	NEW BEETLE	44,5
GS28489	SEVERAL APLICACIONES	45,6	GS28535	CABRIOLET	57,9
GS28490	SEVERAL APLICACIONES	45,6	GS28536	75	39,1
GS28491	SEVERAL APLICACIONES	45,68	GS28537	E KLASSE	44,8
GS28492	SEVERAL APLICACIONES	33,82	GS28538	BERLINGO	48,9
GS28493	SEVERAL APLICACIONES	34,45	GS28539	S60	56,1
GS28494	SEVERAL APLICACIONES	44,94	GS28540	626 GE RH	61,2
GS28495	SEVERAL APLICACIONES	46,03	GS28541	626 GE LH	61,2
GS28496	SEVERAL APLICACIONES	35,63	GS28543	323 III	60,7
GS28497	SEVERAL APLICACIONES	45,1	GS28551	LYBRA	34,6
GS28499	3 SERIES TOURING E30	35,3	GS28558	ESPACE I J11/J13	38,35
GS28500	ASTRA G	35,46	GS28561	LYBRA SW	34,9
GS28501	CLASE C STATIONWAGEN	34,5	GS28563	FABIA	35
GS28502	ASTRA G CARAVAN	46,1	GS28564	FABIA	43,4
GS28503	FABIA	35	GS28565	FABIA	38,2
GS28504	3 SERIES TOURING E30	49,9	GS28567	307	45,3
GS28505	LUPO	45	GS28568	PASSAT V	54,7
GS28506	PALIO WEEKEND	47,5	GS28569	147	39,9
GS28507	A KLASSE	38,8	GS28570	45 / 400 (RF) / MG ZS	48,7
GS28510	206 3D,5D	47,53	GS28571	400 TOURNER	48,7
GS28511	CLIO II B/C/CB/SB0	49,35	GS28573	PALIO	49,5
GS28512	TOLEDO II	54,7	GS28575	156 SPORT	45,6
GS28513	FOCUS WIPER	36,31	GS28576	156	45,6
GS28514	FOCUS KOMBI	45	GS28577	156/SPORTWAGON	51,1
GS28515	FOCUS KOMBI	44,7	GS28579	C 5	44,8
GS28516	ZAFIRA	35,7	GS28580	PRISMA	48,48
GS28517	A6 AVANT (4A, C4)	42,4	GS28581	C5	45
GS28518	XSARA PICASSO	50,5	GS28582	XSARA BREAK / PICASSO	50,8
GS28519	PUNTO II	36,12	GS28583	SCORPIO II	34
GS28520	A KLASSE	36	GS28584	MONDEO KOMBI III	39,4
GS28521	A6	54,6	GS28585	MONDEO III	35,7
GS28522	A6 AVANT	53,4	GS28586	FOCUS WIPER	46,28
GS28524	MULTIPLA (T)	47,5	GS28587	SUD SPRINT	32,19
GS28525	CORSA C	36,12	GS28588	106 II / HATCH	36,4
GS28526	80 AVANT/AVANT QUATTRO	49,8	GS28589	ALMERA TINO	47,6
GS28527	COUPE/COUPE QUATTRO	47,9	GS28594	MATIZ (KLYA)	44,3

## RESORTES / GAS SPRINGS

—○	APLICACION	€ PVP	—○	APLICACION	€ PVP
GS28595	ACCENT (D)	45,2	GS28642	SAFRANE I BACCARA	49,25
GS28596	ELANTRA (D)	46,9	GS28644	800 (XS)	40,1
GS28599	9000 (H1007932/H8000100)	35,68	GS28645	900 I COUPE	35,26
GS28600	VECTRA B	35,99	GS28654	PUMA	36,3
GS28601	VECTRA B	41,8	GS28655	MONDEO III	46,8
GS28602	ASTRA G	35,7	GS28656	309 GTI II	45
GS28603	LAGUNA II	47,4	GS28658	5 SERIES E39	45,9
GS28604	SAFRANE II	53	GS28659	3 SERIES COUPE E36	40,5
GS28605	SAFRANE II	53	GS28662	5 SERIES TOURING E 39	60,4
GS28606	ESPACE III (JE_)	40,7	GS28663	6 SERIES SEDAN E24	44,9
GS28607	LAGUNA II GRANDTOUR	46,8	GS28664	3 SERIES CABRIO/TOURING	48,8
GS28608	MEGANE GRANDTOUR	45,1	GS28665	3 SERIES TOURING E46	82,5
GS28609	LAGUNA I GRANDTOUR	46,6	GS28667	STILO	38,2
GS28610	MEGANE I SALOON	38,2	GS28668	STILO	32,1
GS28611	MEGANE CLASSIC	44,91	GS28669	ULYSSE (179AX)	33,7
GS28612	LAGUNA II GRANDTOUR	46,8	GS28670	166	44,9
GS28613	LAGUNA I GRANDTOUR	48,6	GS28671	166	44,7
GS28614	MEGANE SCENIC 99	38,6	GS28672	FOCUS	44,9
GS28615	MEGANE SCENIC	38,6	GS28673	FIESTA V	33,2
GS28616	MEGANE SCENIC 99 / TT	42,6	GS28674	FOCUS KOMBI	45,3
GS28617	LAGUNA II	48	GS28675	FIESTA V	34,4
GS28618	TT COUPE	40,5	GS28676	C 3	35,6
GS28619	80 QUATTRO	35,7	GS28678	132 TRUNK / MALETERO	34,5
GS28620	ALHAMBRA	46,5	GS28679	VECTRA C	33,7
GS28621	A3	45	GS28680	VECTRA C	35,9
GS28622	80 COUPE/QUATTRO/CABRIOLET	35,8	GS28681	POLO (9N_)	44,9
GS28623	SCIROCCO II	39,99	GS28682	IBIZA IV	44,8
GS28624	CORRADO	40,3	GS28683	A3	44,8
GS28625	GOLF III VARIANT	46,72	GS28684	BRAVA	36,5
GS28626	100/200	36,31	GS28685	FIESTA V	37,8
GS28627	100/200	36,47	GS28686	MULTIPLA (T)	58,7
GS28630	440 / 460	56,7	GS28687	100 (XP)	39,3
GS28632	309 II	32,68	GS28689	406 (8B)	35,4
GS28633	XM	32,2	GS28693	OCTAVIA SEDAN (1U2)	40,1
GS28634	KADETT D	35,45	GS28694	206	36,5
GS28635	104	34,2	GS28695	FIESTA V	38,2
GS28636	504 BREAK/FAMILIAR	34,8	GS28697	155	54,9
GS28637	R19	31,9	GS28698	164	61,9
GS28639	R25 B29	42,43	GS28699	A4 AVANT	51,3
GS28640	SAFRANE I / II	31,8	GS28701	A4 CABRIOLET	42,6
GS28641	R5 ALPINE	33,2	GS28702	LEON	37,1

## RESORTES / GAS SPRINGS

—○	APLICACION	€ PVP	—○	APLICACION	€ PVP
GS28703	POLO 6N2	39,3	GS28758	CARISMA HATCHBACK	40,1
GS28704	FABIA	38,7	GS28762	TOUAREG	31,7
GS28705	POLO (9N_)	44,9	GS28763	605 (6B)	36,5
GS28706	206	52,4	GS28765	306 (7A/B/C/D/E)	50,6
GS28707	206	35,6	GS28766	9-3 (YS3D) / VIGGEN	60,2
GS28708	C8	35,1	GS28767	9-5 (YS3E)	60,2
GS28709	MEGANE II / COUPE	44,6	GS28768	9-3 (YS3D)	36,2
GS28710	VECTRA C	52,9	GS28769	9-3 (YS3D) / VIGGEN	36,2
GS28711	C5 BREAK	48,5	GS28771	DOBLO	44,9
GS28713	A4 CABRIOLET	35,7	GS28773	PANDA	51,6
GS28718	TT ROADSTER	40,7	GS28774	STILO MULTIWAGON	37,9
GS28719	TT COUPE	40,7	GS28776	CIVIC V AERODECK	52,4
GS28721	TT ROADSTER	40,7	GS28777	CIVIC VI	36,2
GS28722	LUPO	45	GS28778	CIVIC VI	44,7
GS28723	LUPO	45	GS28782	MICRA	53,4
GS28727	S90	36,5	GS28783	MERIVA	31,7
GS28728	940 / 960	36,5	GS28784	75 TOURER	53,1
GS28729	C70	44,8	GS28785	75 TOURER	50,8
GS28730	C70	50,1	GS28786	STREETWISE	48,8
GS28731	A KLASSE	38,8	GS28787	AVENSIS Station Wagon (_T22_)	50,8
GS28732	C KLASSE KOMBI	47,9	GS28788	COROLLA	42,1
GS28733	9-3 (YS3D)	36,5	GS28789	COROLLA WAGON	44,3
GS28734	900 (YS3D)	36,5	GS28790	COROLLA VERSO	47,7
GS28735	AVANTIME	31,9	GS28791	VECTRA C CARAVAN	40,1
GS28736	KAPPA	44,9	GS28792	607	53,4
GS28737	LYBRA	51,1	GS28805	C 2	50,8
GS28738	KAPPA	53,2	GS28806	A3	49,3
GS28739	VOYAGER (T)	39,9	GS28808	A3	48,6
GS28744	STA FE	32,6	GS28809	MONDEO III	35,7
GS28745	STA FE	43,9	GS28812	POLO (9N_)	45
GS28746	STA FE (T)	45	GS28813	MONDEO III	35,7
GS28747	SONATA IV(D)	48,8	GS28814	FOCUS C-MAX	40,1
GS28748	COUPE	43	GS28815	TRANSIT (T)	49
GS28749	COUPE	43	GS28822	BARCETA	36,4
GS28750	ELANTRA	49,6	GS28825	ESCORT CABRIOLET MK V	50,1
GS28752	PRIMERA	34,1	GS28831	CLK / CABRIOLET	40,2
GS28753	PRIMERA	47,9	GS28850	800 (XS) / COUPE	45
GS28754	PRIMERA TRAVELLER	44,3	GS28851	9000 CD	30,8
GS28755	PRIMERA	47,5	GS28852	9000 CS	43,6
GS28756	PRIMERA TRAVELLER	37,9	GS28853	9000 CS	43,8
GS28757	SPACE STAR	34,4	GS28854	9000	34,3

## RESORTES / GAS SPRINGS

—○	APLICACION	€ PVP	—○	APLICACION	€ PVP
GS28855	9000	35,9	GS32010	COROLLA EE/CE90/AE92 RH	71,71
GS28862	480 ES COUPE	50,9	GS32011	COROLLA EE/CE90/AE92 LH	71,71
GS28864	SCIROCCO I	32,5	GS32014	COROLLA AE80/EE80/CE80/AE82	70,78
GS28865	TRANSPORTER / BUS T3	35,6	GS32015	COROLLA HB COMPACT EE80	59,36
GS288725	LUPO	45,6	GS32016	COROLLA WAGON KE70/CE70	70,78
GS30001	323 BF RH	69,22	GS32041	VANETTE C220	68,49
GS30002	323 BF LH	69,22	GS33001	CIVIC II	41,44
GS30003	323 BG LH 3 DOORS	69,22	GS33002	CIVIC III	41,44
GS30004	323 BG RH 3 DOORS	69,22	GS33003	CIVIC IV 3 DOORS	43,27
GS30005	626 GC LH	69,22	GS33004	CIVIC IV 5 DOORS	43,27
GS30006	626 GC RH	69,22	GS34001	H 100 LH IZQUIERDO	66,21
GS30007	626 GG LH	69,22	GS34002	H 100 RH DERECHO	66,21
GS30008	626 GG RH	69,22	GS35001	ALTO II	66,21
GS31001	SUNNY HB II N 13	61,64	GS35002	SWIFT LH	66,21
GS31002	SUNNY HB N 13	61,64	GS35003	SWIFT RH	66,21
GS31003	SUNNY COUPE (B-11)	61,64	GS36001	VAN PREGIO	66,21
GS31007	SUNNY SW B 12	66,21	GS36002	VAN BESTA	66,21
GS31008	SUNNY III SW Y 12	70,78	GS37001	GALANT GTI 16V E33A/E39A	109,59
GS31009	PRIMERA SW	70,78	GS37002	L-300	79,91
GS31010	PRIMERA SW	70,78	GS40018	COUPE / COUPE QUATTRO	43,2
GS31011	BLUEBIRD U 11	70,78	GS40019	90/90 QUATTRO	43,2
GS31012	BLUEBIRD T 12	70,78	GS40021	9000	48,29
GS31013	BLUEBIRD T 12	70,78	GS40024	3 SERIES CABRIOLET	43,5
GS31016	MICRA (K10)	68,49	GS40025	3 SERIES SEDAN, CABRIO E30	52
GS31022	PATROL RH	54,04	GS40046	XM	48,5
GS31023	PATROL LH	54,04	GS40061	R25 B29	48,5
GS31024	PRIMERA 4D	51,84	GS40075	XANTIA	45,6
GS31025	PRIMERA 4D SPOILER	51,84	GS40115	406 COUPE (8C)	43,2
GS31026	PRIMERA 5D	36,17	GS40121	OMEGA A	43,2
GS31027	PRIMERA 5D SPOILER	36,17	GS40122	SENATOR MK II	45,6
GS31036	SERENA SGX.SLX RH	60,42	GS40123	ESPACE III (JE) / GRAND ESPACE III	45,6
GS31037	SERENA SGX.SLX LH	60,42	GS40124	MEGANE COUPE	48,6
GS31040	CHERRY N12	68,49	GS40126	LAGUNA II GRANDTOUR	45,6
GS32001	CARINA AT171/ST171/CT170 RH	70,78	GS40133	90/90 QUATTRO	44,8
GS32002	CARINA AT171/ST171/CT170 LH	70,78	GS40134	PUNTO CABRIO	49,7
GS32004	CARINA AT171/ST171/CT170 LH	70,78	GS40144	CALIBRA A	49,7
GS32005	CARINA AT171/ST171/CT170 RH	70,78	GS40154	3 SERIES COMPACT E36	49,7
GS32006	CARINA AT171/ST171/CT170 RH	70,78	GS40155	3 SERIES COMPACT E36	45,8
GS32007	CARINA AT171/ST171/CT170 LH	70,78	GS40156	3 SERIES BERLINA/COUPE	49
GS32008	COROLLA HB EE90/AE92 RH	71,71	GS40157	5 SERIES E 34	30,77
GS32009	COROLLA HB EE90/AE92 LH	71,71	GS40160	ACCENT	52

## RESORTES / GAS SPRINGS

	APLICACION	€ PVP		APLICACION	€ PVP
GS40165	190/190E (W201)	81,1	GX06002	PUNTO II	45,16
GS40176	V70	82,5	GX06002	INOX FIAT PUNTO II 99-	45,16
GS40177	ALHAMBRA	50,2	GX06003	BRAVO	50,93
GS40180	3 SERIES TOURING/COMPACT E36	48,8	GX06003	INOX FIAT BRAVO 95-	50,93
GS40181	5 SERIES TOURING E 34	50,2	GX06004	MAREA WEEKKEND	65,4
GS40182	7 SERIES E 32	53	GX07001	FIESTA III	52,02
GS40184	5 SERIES E 34	43,4	GX07001	INOX FIESTA IV 96-	52,02
GS40188	PUNTO CABRIO	45,6	GX07002	FOCUS WIPER	55,87
GS40193	VECTRA MK I	58,9	GX07002	INOX FOCUS WIPER 98-2002	55,87
GS40194	307	44,3	GX07003	FOCUS WIPER	57,84
GS40197	5 SERIES E 28	60,7	GX07003	INOX MONDEO III 2000-	57,84
GS40299	S60 / S80 / V70	67,3	GX07901	ESCORT V.VI	59,36
GS40300	CIVIC III	67,3	GX07901	INOX Front Bonnet FORD ESCORT V.VI*	59,36
GS40301	CIVIC IV	65,4	GX07902	KA	59,36
GS40307	924 / 944 / CABRIOLET	65,4	GX07902	INOX Front Bonnet FORD KA*	59,36
GS40309	928	65,4	GX07903	MONDEO I / II	59,36
GS51214	3 SERIES COUPE	65,4	GX07903	INOX Front Bonnet FORD MONDEO I,II*	59,36
GS51241	SMART	65,4	GX07904	INOX Front Bonnet FORD FIESTA III*	59,36
GS51242	ML SERIE	65,4	GX07905	INOX Front Bonnet FORD ESCORT VII*	59,36
GS51243	VITO	65,4	GX08901	INOX Front Bonnet HONDA CRX II*	59,36
GX02001	A4 AVANT	55,43	GX18001	INOX ALMERA 2000-	59,28
GX02001	INOX AUDI A3/A4 AVANT 96-	55,43	GX19001	INOX ASTRA G 98-	44,33
GX02002	A4	66,15	GX19002	INOX CORSA C 2000-	45,16
GX02002	TT COUPE/ROADSTER	66,15	GX19003	INOX VECTRA B 98-2002	44,98
GX02002	INOX AUDI A4 94-2000	66,15	GX19901	INOX Front Bonnet OPEL ASTRA E+KADETT E*	59,36
GX02901	A3	59,36	GX19902	INOX Front Bonnet OPEL ASTRA F*	59,36
GX02901	INOX Front Bonnet AUDI A3	59,36	GX19903	INOX Front Bonnet CALIBRA A*	59,36
GX02902	A4 AVANT	59,36	GX19904	INOX Front Bonnet OPEL CORSA A*	59,36
GX02902	INOX Front Bonnet AUDI A4*	59,36	GX19905	INOX Front Bonnet OPEL CORSA E+ CORSA B*	59,36
GX04901	3 SERIES SEDAN, CABRIO E36	59,36	GX19906	INOX Front Bonnet OPEL TIGRA*	59,36
GX04901	3 SERIES TOURING E30	59,36	GX19907	INOX Front Bonnet OPEL VECTRA A*	59,36
GX04901	INOX Front Bonnet BMW 3 SERIE	59,36	GX19908	INOX Front Bonnet OPEL VECTRA B*	59,36
GX04902	3 SERIES COUPE E36	59,36	GX19909	INOX Front Bonnet OPEL VAUXHALL ASTRA E+KADETT E*	59,36
GX04902	INOX Front Bonnet BMW 3 SERIE COUPE	59,36	GX20001	INOX 406 BERLINA 95-	49,6
GX04903	INOX Front Bonnet BMW CHASIS E36	59,36	GX20002	INOX 106 II / HATCH 96-	45,35
GX05001	SAXO	49,79	GX20003	INOX 206 3D,5D 98-	59,42
GX05001	INOX SAXO 96-	49,79	GX20004	INOX 306 (7A,7C) 94-2201	55,43
GX05002	INOX XSARA 97-	68,08	GX20005	INOX 307 2000-	56,46
GX05003	XSARA	65,4	GX22001	INOX MEGANE COUPE DA 96-	56,68
GX06001	BRAVA	50,93	GX22002	INOX MEGANE BERLINA/SORT 99-2002	47,6
GX06001	INOX FIAT BRAVA 95-	50,93	GX22003	INOX LAGUNA II 2001-	58,99



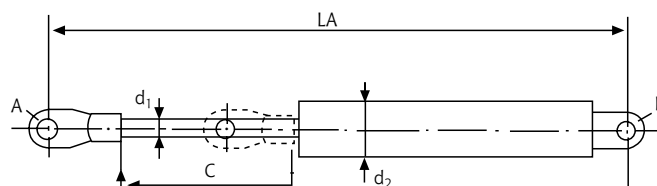
## RESORTES / GAS SPRINGS

	APLICATION	€ PVP	NOTES
GX22004	INOX MEGANE CLASSIC 96-	55,36	
GX22005	INOX MEGANE SCENIC JA 96- 99	47,89	
GX22006	INOX CLIO II B/C/CB/SB0 98-	61,69	
GX25001	INOX IBIZA II 93- 99	49,79	
GX25002	INOX CORDOBA 93- 99	44,14	
GX25003	INOX TOLEDO II 99-	45,38	
GX25004	INOX LEON 99-	55,43	
GX25901	INOX Front Bonnet SEAT AROSA*	59,36	
GX31001	INOX POLO 6N1 94-	48,64	
GX31002	INOX PASSAT IV 3B 96-	67,98	
GX31003	INOX BORA 1J 98-	66,15	
GX31004	INOX GOLF IV 99-	66,44	
GX31901	INOX Front Bonnet VOLKSWAGEN PASSAT 351*	59,36	
GX31902	INOX Front Bonnet VOLKSWAGEN GOLF I*	59,36	
GX31903	INOX Front Bonnet VOLKSWAGEN GOLF II*	59,36	
GX31904	INOX Front Bonnet VOLKSWAGEN GOLF III*	59,36	
GX31905	INOX Front Bonnet VOLKSWAGEN GOLF IV	59,36	
GX31906	INOX Front Bonnet VOLKSWAGEN PASSAT 3B*	59,36	
GX31907	INOX Front Bonnet VOLKSWAGEN POLO 86C*	59,36	
GX31908	INOX Front Bonnet VOLKSWAGEN NEW BEETLE*	59,36	
GX31909	INOX Front Bonnet VOLKSWAGEN BORA	59,36	
GX31910	INOX Front Bonnet VOLKSWAGEN LUPO*	59,36	
GX31911	INOX Front Bonnet VOLKSWAGEN POLO 6N*	59,36	
UNIV200100	UNIVERSAL 200mms.xxnwts.	20	
UNIV250100	UNIVERSAL 250mms.xxnwts.	20	
UNIV300100	UNIVERSAL 300mms.xxnwts.	20	
UNIV350100	UNIVERSAL 350mms.xxnwts.	20	
UNIV400100	UNIVERSAL 400mms.xxnwts.	20	
UNIV450100	UNIVERSAL 450mms.xxnwts.	20	
UNIV500100	UNIVERSAL 500mms.xxnwts.	20	
UNIV550100	UNIVERSAL 550mms.xxnwts.	20	
UNIV600100	UNIVERSAL 600mms.xxnwts.	20	
UNIV650100	UNIVERSAL 650mms.xxnwts.	20	
UNIV700100	UNIVERSAL 700mms.xxnwts.	40	
UNIV750100	UNIVERSAL 750mms.xxnwts.	40	
UNIV800100	UNIVERSAL 800mms.xxnwts.	40	
0304 kit	Fijacion orejeta met. 8.1 blister 10uds.	25	
0309 kit	Fijacion orejeta met. 9.1 blister 10uds.	30	
5151 kit	Fijacion rotula plastico blister 10uds.	25	

JUNIOR Gas Spring are indicated for load compensation or operation of movable systems two positions.

Los resortes neumáticos JUNIOR están indicados para la compensación de cargas o el accionamiento de sistemas móviles entre dos posiciones.

Les ressorts pneumatiques JUNIOR sont indiqués pour la compensation de chargements ou l'actionnement de systèmes mobiles entre deux positions.



## Calculation of force to be provided by a gas strut.

**Cálculo del esfuerzo que ha de proporcionar un resorte neumático.**

**Calcul de l'effort qui doit fournir un ressort pneumatique.**

$$F_1 \frac{P \cdot M}{N \cdot L} + (10 \div 15\%)$$

$$F_1 \frac{400 \text{ mm.}}{200 \text{ mm.}} \times 300 \text{ N} = 600 \text{ N}$$

G = Centre of gravity • Centro de Gravedad • Centre de gravité.

P = Weight • Peso • Poids.

L = Minimum distance from the gas spring to pivot centre. Effective lever arm of the gas spring • Longitud mínima del resorte al centro de giro. Brazo eficaz de palanca del resorte • Longueur minimum du ressort au centre de tourne. Bras efficace de levier du ressort.

M = Horizontal distance from centre of gravity to pivot centre • Longitud horizontal del centro de gravedad al centro de giro • Longueur horizontale du centre de gravité au centre de tour.

N = Number of gas springs • Número de resortes • Quantité de ressorts.

F<sub>1</sub> = Gas spring pressure (force of the extended gas spring) • Presión de resorte (fuerza del resorte extendido) • Pression du ressort (force du ressort tendu).

F<sub>2</sub> = Initial force to open the gas spring • Fuerza inicial para abrir el resorte • Force initiale pour ouvrir le ressort.

F<sub>3</sub> = Initial force to compress the gas spring • Fuerza inicial para comprimir el resorte • Force initiale pour comprimer le ressort.

F<sub>4</sub> = Force of the compressed gas spring • Fuerza del resorte comprimido • Force du ressort comprimé.

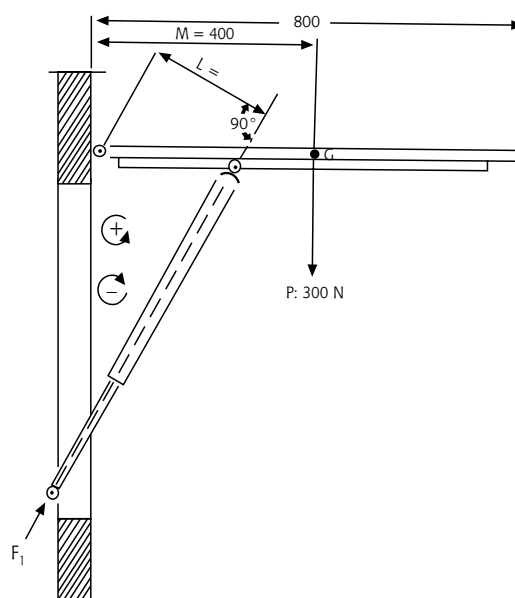
(Friction • Rozamiento • Frottement):

$$F_r = F_3 - F_1; F_r = 50 \text{ N} \quad 10 \text{ N} = 1 \text{ Kg.}$$

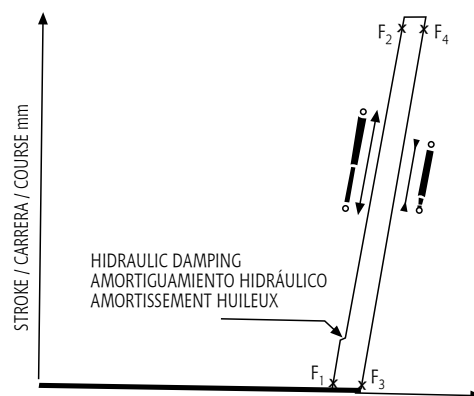
Manufacturing tolerance • Tolerancia de fabricación •

Tolerance de fabrication: F<sub>1</sub> ± 20 N

The opening speed can be regulated from 0,2 ÷ 0,6 m/s • La velocidad de apertura puede ser regulada desde 0,2 ÷ 0,6 m/s • La vitesse d'ouverture peut-être réglée à partir 0,2 ÷ 0,6 m/s



## FORCE DIAGRAM DIAGRAMA DE ESFUERZOS DIAGRAMME D'EFFORTS





**Junior**  
GAS SPRING

Tel.: +34 955 63 01 37 • 902 19 58 47 • Fax: +34 95 563 16 35  
[pedidos@juniorgasspring.com](mailto:pedidos@juniorgasspring.com)  
[www.juniorgasspring.com](http://www.juniorgasspring.com)

**GAS SPRING**